

DIVICATCH RF-C



Your own world's finest Analyzer

THE **DIVICATCH RF-C** IS A POCKET ANALYZER CUMULATING DIGITAL CABLE RF LIVE RECEPTION WITH MPEG-2 TS REAL-TIME ANALYSIS AND RECORDING.

The DiviCatch RF-C provides **real-time analysis** at different levels:

- **RF**: measures key RF signal parameters (Level, MER, SNR, BER) and indicates the modulation parameters, the constellation as well as the Channel Impulse Response.
- **MPEG-2 TS**: the 3 priority levels of ETSI TR 101 290 are implemented. Bitrate can be analyzed globally, by service, by PID. Alarm thresholds are customizable. Baseband streams can be captured using the **ASI input** or the PC's **IP input**. File-based **offline analysis** is also available. The alarm events and RF measurements (trends) can be stored into **report files**.

In addition, the DiviCatch RF-C can be used as a **gateway** which retransmits the input RF signal **over RF output loop** and the baseband stream **over IP**.

TestTree proposes a real-time analysis application, **DiviSuite**, running on **MS Windows**, connected to the DiviCatch RF-C via **USB connectivity**, with customizable monitoring screens. The application integrates a video decoder enabling **real-time decoding** of all unencrypted services (**H.265/HEVC, H.264/MPEG-4 AVC, MPEG-1/2, AAC, MP3...**). It also features live stream capture capabilities for baseband multiplex **recording** into a TS file.

The DiviCatch RF-C, a 2-in-1 product featuring both **RF + baseband** analysis, and **TS recording** capabilities, offers a cost-effective test solution for field, lab or head-end applications.



- TO TEST APPLICATIONS
- TO VALIDATE BOTH RF & BASEBAND
- TO ACHIEVE COST-EFFICIENCY ON BROADCAST NETWORKS

CHARACTERISTICS

1x RF input for Digital Cable
1x RF loop output
ITU-J83 Annexes A, B, C supported
1x ASI input
IP source analysis (from PC)
RF measurements: signal level, SNR, MER, BER, EVM
Graphical constellation, Channel Impulse Response display
PIDs and PSI/SI parsing, PCR graphs
ETSI TS 101 290 validation (priority 1, 2, 3)
Audio/Video player (H.265/HEVC, H.264/MPEG-4 AVC, MPEG-1/2, AAC, MP3...)
MPEG-2 TS recording
MPEG-2 TS over IP forward (PC's Ethernet interface selection)
Compatible MS Windows XP/Vista/7/8/10
USB self-powered, 160 g

APPLICATIONS

- R&D Streams or Signal Analysis
- Digital Cable Troubleshoot
- Installation & Maintenance Test Tool
- RF Reception Quality
- Portable Demonstration Setup

KEY BENEFITS

- 2-in-1 product: RF/Baseband Analyzer + TS Recorder
- **Compact** (pocket size, **160 g**) and USB self-powered
- Receive live Digital Cable signals (ITU-J83 modes)
- **All modulation schemes supported** (from QPSK to 256QAM)
- Analyze/Validate MPEG-2 TS Layer in real-time
- Add your own table and specifications Analysis (PSI/SI,...)



TECHNICAL CHARACTERISTICS

RF

Standards	ITU-J83 Annexes A, B, C
Connector In	1x F-type female - 75 Ω
Connector Out (loopback)	1x F-type female - 75 Ω
Sensitivity	-80 to -5 dBm / 28 to 104 dB μ V
Frequency range	50 to 900 MHz (125 kHz resolution)
Channel bandwidth	6 & 8 MHz
Modulation	16QAM, 64QAM, 128QAM, 256QAM
Symbol rate	0.87 to 7 Msymbols/s

DVB-ASI

Connector In	1x BNC female - 75 Ω
Max bitrate	140 Mbps

USB Data connector	1x USB2 B-Type
---------------------------	----------------

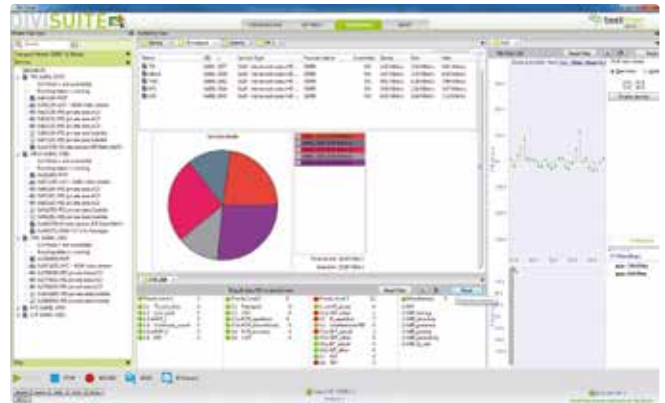
Power supply	USB self-powered
---------------------	------------------

Environment

Operating temperature	-20 to 55 $^{\circ}$ C / -4 to 131 $^{\circ}$ F
-----------------------	---

Physical

Dimensions	135 x 62 x 27 mm / 5.3 x 2.5 x 1.1 in
Weight	160 g



BASEBAND TRANSPORT MONITORING

MPEG-2 TS features analyzed in real-time from either source:

- RF or DVB-ASI through USB from the DiviCatch
- IP from the PC's Ethernet interface

Or analyzed offline from TS file source

ETSI TR 101 290: priorities 1, 2, 3

Service information

- PSI/SI table display for MPEG, DVB; including private tables
- Service components type and structure
- PID summary

Bitrate monitoring

- Overall, by Service (Program), by PID

PCR Accuracy graphs

RF MEASUREMENTS

All measurements are made in real-time

Graphical display	Constellation, Channel Impulse Response
Signal level	-75 to -10 dBm / 33 to 99 dB μ V
SNR	17 to 41 dB
MER	15 to 33 dB
EVM	0 to 100 %
BER	Pre-RS

BASEBAND TRANSPORT PROCESSING

Audio/video decoding (unencrypted programs): stream display

- H.265/HEVC, H.264/MPEG-4 AVC, MPEG-1/2, AAC, MP3...

Recording of the entire multiplex (MPTS/SPTS) into a TS file

Real-time forward of the entire multiplex to **ASI** or **IP** (unicast or multicast over UDP streaming)

ORDERING CODES

DiviCatch RF-C

DVB-C Pocket Analyzer

Shipped bundled with DiviSuite Base software for MS Windows XP/Vista/7/8/10

Software options

RF Scope
TS Analyzer

RF Analysis
MPEG-2 TS Analysis

48HMAX SHIPMENT

All Options Bundle (RF + TS)

sales@test-tree.com

www.test-tree.com