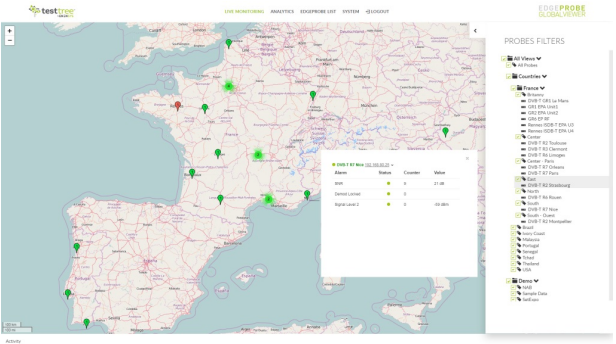


GLOBALVIEWER

Centralize your Network Quality & Service Availability views!

CENTRALIZATION SOLUTION FOR EDGEPROBE MANAGEMENT: LIVE SUPERVISION AND ANALYTICS REPORTING.



APPLICATIONS

- **Live Supervision** of your Network's QoS
- Centralized **monitoring data** with a **real-time Dashboard**
- **Report generation** for SLA commitments

Live Supervision

- **Synthetic overview** of the monitoring status
- **Map display** of the deployed monitoring Probes
- Direct access to the Probes for detailed monitoring information
- **Display filtering & restricted user access** via customizable Probe groups: region, site, SFN cell, multiplex, service, client...

Reporting

- **Automatic Report** generation for **SLA** commitments, internal reporting, maintenance & operation
- **Highly customizable**: build the structure sections, metric graphs, add comments
- All **raw data included** in ZIP file

Restricted User Overview

- **User management** rights: administrator, manager, operator
- Possibility to **restrict the view** per Service/Multiplex, Operator, Location...

BENEFITS

- **Centralized** management of your deployed EdgeProbe
- **Easy to use and configure**
- Compatible with **low bandwidth control networks** (GPRS/3G/4G)
- Virtualized **SW based** solution

Analytics

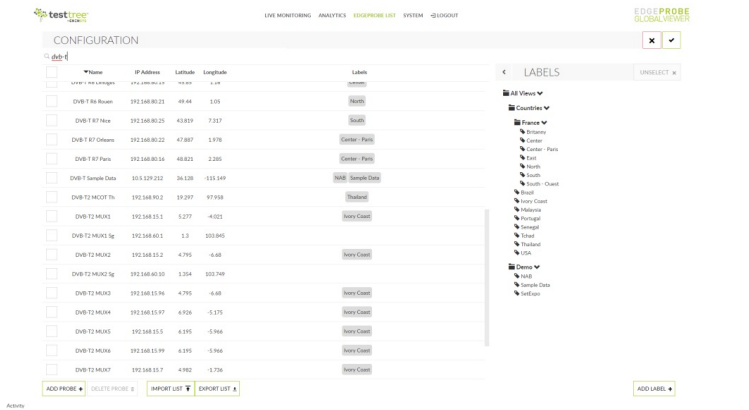
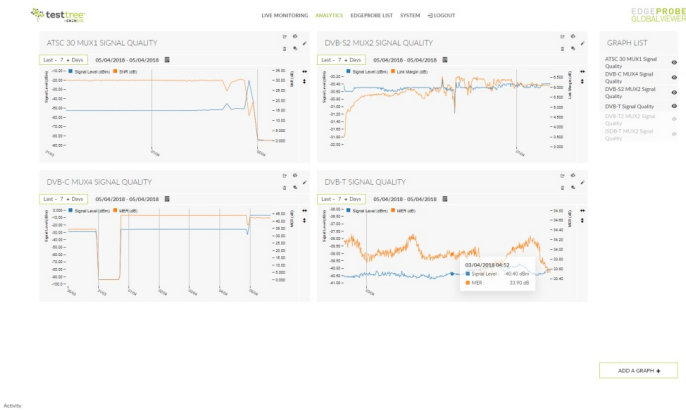
- **Quality of Service & Service Availability** statistics; based on the Probes monitoring data
- **Real-time dashboard** display
- **Highly customizable** for different purpose **views: operation, maintenance, fault investigation**

Alerting

- Notify by **automatic Email** all service degradation & faults based on the monitoring Probes alarming
- Alerts filtering capabilities

System

- Full **SW**, deployed in **virtualized** environment
- **HTTP/HTTPS** support
- Maximum number of Probes: 200 (might vary upon hardware)
- Maximum simultaneous Users: 10 (might vary upon hardware)



ORDERING_CODES

GlobalViewer	Centralized Network Quality & Service Availability
options	<p>GlobalViewer : Perpetual Software License for centralized view of the network monitoring status: - 20x TestTree Probe licenses (EdgeProbe monitoring units) - 10x User access (restricted access: administrator, manager, operator)</p> <p>GV-AdditionalUser : Add 1x User access license</p> <p>GV-AdditionalProbe21-50 : Additional Probe license (21 to 50 probes, price per unit)</p> <p>GV-AdditionalProbe51-100 : Additional Probe license (51 to 100 probes, price per unit)</p> <p>GV-AdditionalProbe101-300 : Additional Probe license (101 to 300 probes, price per unit)</p>
sales@test-tree.com	www.test-tree.com