

STREAMPROBE

VOD

QoS & QoE check for all VOD based services: xVOD, Catch-up/Replay, PVR, all ABR assets...

STREAMPROBE SOLUTION PROVIDES A CENTRALIZED OVERVIEW OF THE **SERVICE AVAILABILITY AND VIDEO QUALITY THROUGHOUT ALL THE STRATEGIC STAGES OF THE MEDIA PROCESSING & DELIVERY FLOW, BY 24/7 MONITORING**. IDEAL FOR ALL **TV SERVICE PROVIDERS & NETWORK OPERATORS** – LINEAR BROADCAST TV, IPTV, CABLE TV, SATELLITE TV, OTT, VOD, NPVR – **TRANSPORT CONTRIBUTION & DISTRIBUTION** AND **SERVICE PLATFORM PROVIDERS**, LOOKING TO **ENSURE THE BEST END-USER QUALITY OF EXPERIENCE** ALL WHILE **OPTIMIZING OPEX**.

APPLICATIONS

- **End-to-end Availability (QoS) and Quality (QoE) for all VOD based Services**
- **Increase uptime** by detecting issues before your customers do
On demand monitoring of both static & dynamic libraries
- **Optimize daily operation & maintenance**
Drill down analysis, on-error proof recording
- **Quality Reports generation for SLA commitments**

Monitor what you need, when you need

- Highly **configurable monitoring Campaigns** adapted for **both static & dynamic libraries**
- **One-shot or recurrent** (several hours, days, weeks...) monitoring Campaigns
- Monitoring modes: **QoS, QoS & QoE, QoS with QoE the first time only**
- **ABR asset provisioning: manual** (CSV import) or **automatic via a dedicated API** (requires specific integration services)

QoS - ABR Assets Availability & Integrity

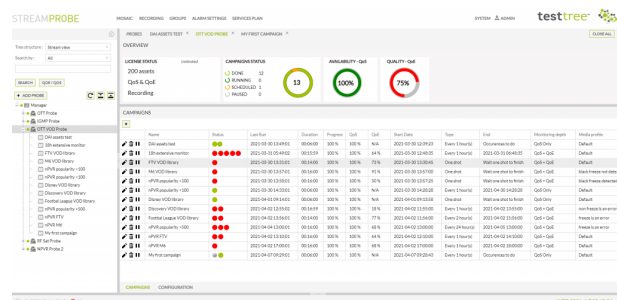
- Full **HLS, MPEG-DASH** monitoring
- **Playlist integrity** check
- **All Profiles availability** check
- **Fast library availability check** when limited to QoS only

Per Asset dedicated monitoring results

- ABR asset **Quality overview: alarms timeline** with **associated video thumbnails**
- **Visual tool for fault investigation** on all ABR stream's profiles, up to 7 days

System Integration & NBI

- **Configurable alarming thresholds** per Campaign
- NMS integration: **SNMPv2** support for alarm traps



BENEFITS

- **Highly configurable monitoring Campaigns**
- **One single unified web GUI for all Services Management**
Contribution, encoding, packaging, transport, linear, VOD
Fast training of operational teams
- **Pay as you grow with flexible licensing & deployment architecture**
HighDensity full SW solution
Centralized or distributed architecture, bare metal, virtualized, on-prem, cloud AWS

Library Quality Stats & Reports

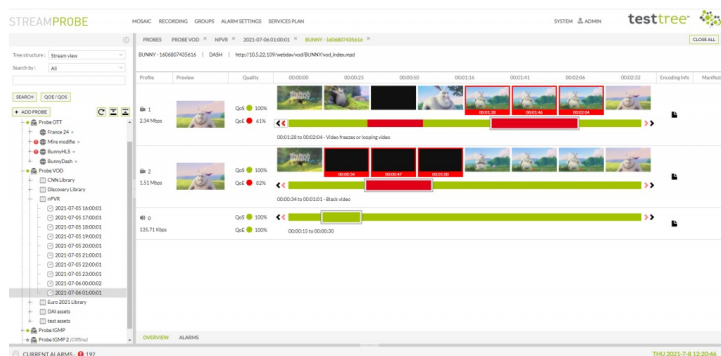
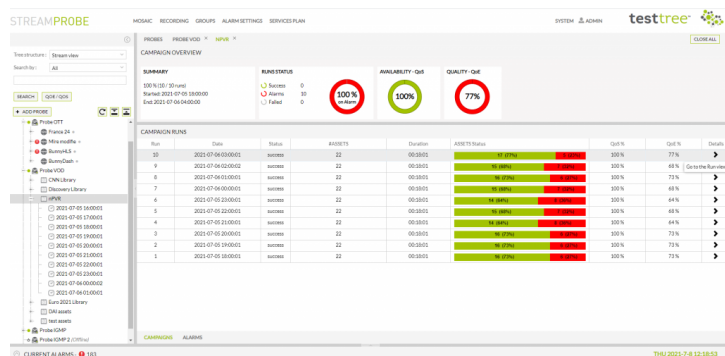
- **QoS & QoE quality evaluation** globally for each Campaign, and also detailed down to the asset itself
- **All quality statistics & monitoring** results exported within **PDF report files***
- **Fault history reports** for operational maintenance

QoE - Audio/Video Service Quality

- Full content monitoring of **all ABR profiles**
- **Audio & Video defect** detection: freeze, black screen, silence
- **ABR Subtitles** HLS WebVTT and DASH TTML: decoding and display
- **Video image** display

DRM support

- ABR streams decryption capabilities
- Via **direct Key Server access** (proprietary, CPIX)
- **CENC, Sample-AES, AES-128** – Widevine, FairPlay, PlayReady



MONITORING FEATURES

QoS - ABR Assets Availability & Integrity check	Full HLS, MPEG-DASH monitoring Playlist integrity check All Profiles availability check Fast library availability check when limited to QoS only
QoE - Service Audio/Video Quality	Video defect detection: freeze, black screen, missing Intra frame Video encoding information: type, pixel format, profile, level, GOP structure and size, image count and weight, width, height, aspect ration, frame rate and type, VB delay Audio defect detection: silence, level too low/high Audio encoding information: type, channel number and layout, sample rate and format Subtitles HLS WebVTT and DASH TTML: decoding and display Formats: MPEG-1 audio, MPEG-2 audio/video, AAC, HE-AAC, HE-AACv2, AC3 Dolby Digital, EAC-3 Dolby Digital Plus, SD & HD MPEG-4 AVC/H264, 4K HEVC/H265
Highly configurable monitoring Campaigns	Adapted for both static & dynamic libraries One-shot or recurrent (several hours, days, weeks..) Monitoring modes: QoS, QoS & QoE, QoS with QoE the first time only ABR asset provisioning: manual (CSV import) or automatic via a dedicated API (requires specific integration services)
Library Quality Stats & Reports	QoS & QoE quality evaluation globally for each Campaign, and also detailed down to the asset itself All quality statistics & monioring results exported within PDF report files* Fault history reports for operational maintenance
Asset dedicated monitoring results	ABR asset Quality overview: alarms timeline with associated video thumbnails Visual tool for fault investigation on all ABR stream's profiles, up to 7 days
DRM support	ABR streams decryption capabilities Via direct Key Server access (proprietary, CPIX) CENC, Sample-AES, AES-128 – Widevine, FairPlay, PlayReady
System Integration & NBI	Configurable alarming thresholds per Campaign NMS integration: SNMPv2 support for alarm traps

ORDERING_CODES

StreamProbe VOD	Video QoS & QoE Monitoring for all xVOD services – non-linear OTT services
options	#Assets : Define the number of assets to to monitor simultaneously SW Pack ACCESS : Full QoS & QoE SW Pack PERFORMANCE : Operational Add-ons SW Pack ULTIMATE : Additional Services

sales@test-tree.com	www.test-tree.com
---------------------	-------------------

TECHNICAL CHARACTERISTICS

SW Appliance solution: Linux OS, VM (ESXi >v6.0, KVM), AWS
Performance CPU, RAM, HDD depending on the number of assets to monitor simultaneously
*
*Contact us for availability